



FORREST

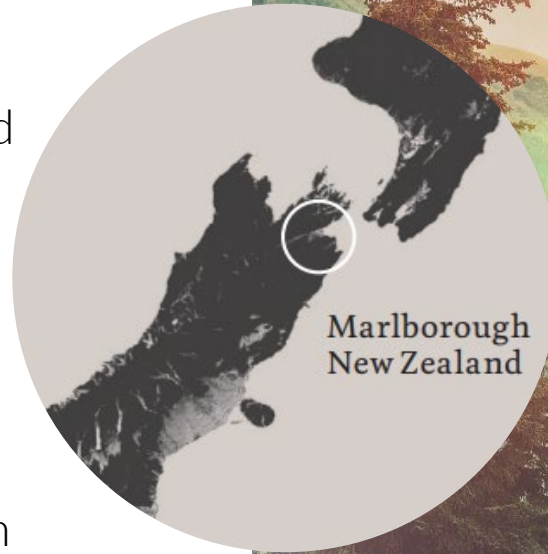
MARLBOROUGH

30 years of craft.

Quintessential

# Who are we?

- Forrest was one of the first wineries in Marlborough, started in late 1980s by Drs John & Brigid Forrest
- Started with 10 acres of apples a shed and 15 acres of bare land
- Now have 185 acres, producing 70,000 cases a year across 3 brands
- The predominate varietal is Sauvignon Blanc, but we have 15 varietals planted
- 1 of only 12 second generation wineries out of 159 in the region.

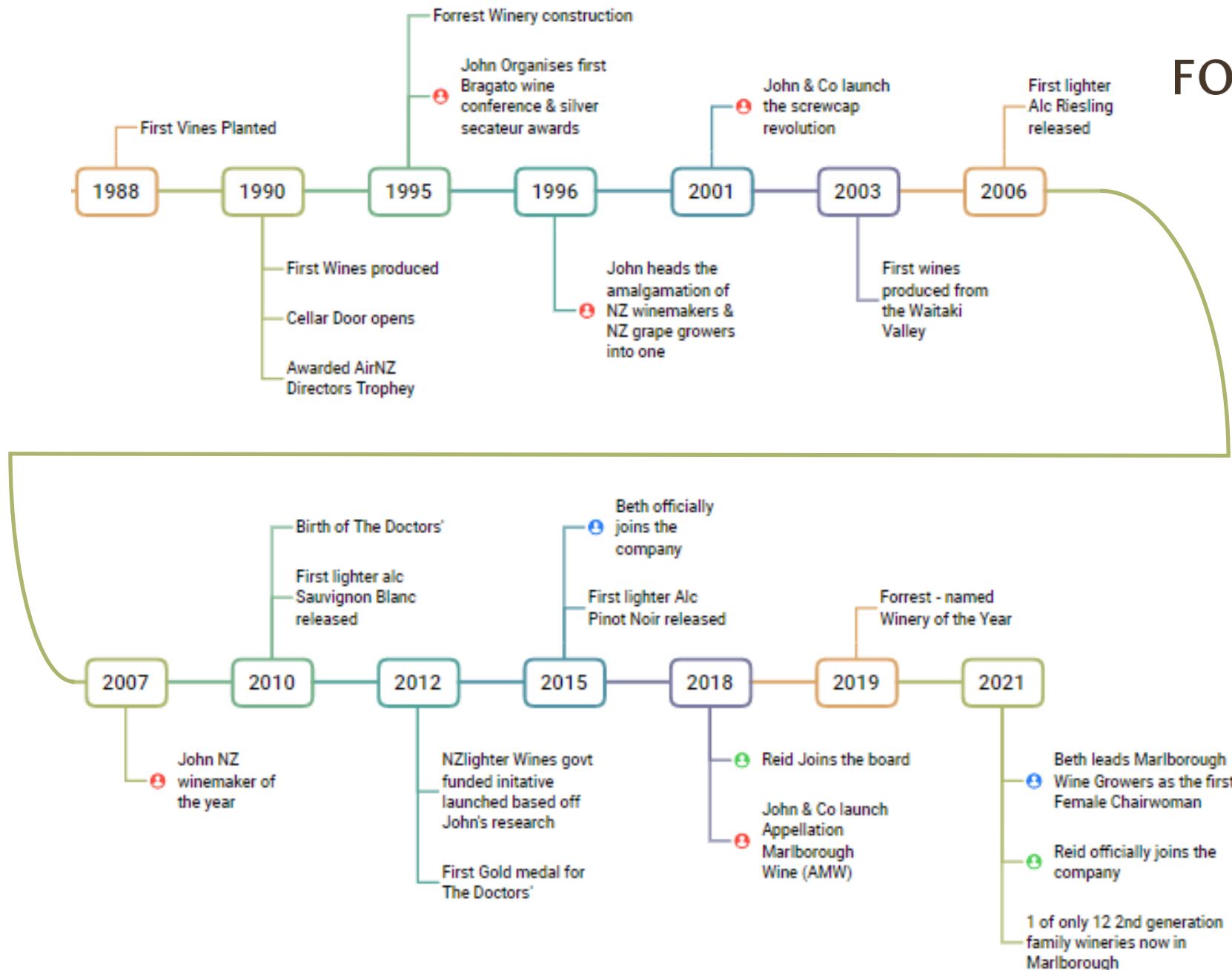


**FORREST**





# FORREST



You're not drinking one year's vintage

You're drinking 30 years of Forrest.





2015  
Beth, John, Brigid, Sam and Reid  
Founders:  
John & Brigid  
Forrest



GM:  
Beth Forrest

Ops Manager:  
Reid Forrest

Board Member:  
Sam Forrest





THINK DIFF





FORRES





# NEW ZEALAND WINE

- New Zealand's wine regions extend 1,100km (700 miles) from subtropical Northland down to Central Otago, home to the world's most southerly vineyards.
- Our vineyards benefit from the moderating effect of our maritime climate (no vineyard is more than 120km, or 80 miles, from the ocean), long sunshine hours and nights cooled by sea breezes.
- Most of our wine regions are found on the eastern coastlines of the North and South Islands, in the rain shadow of the mountains, each with its own unique soils and climatic conditions.





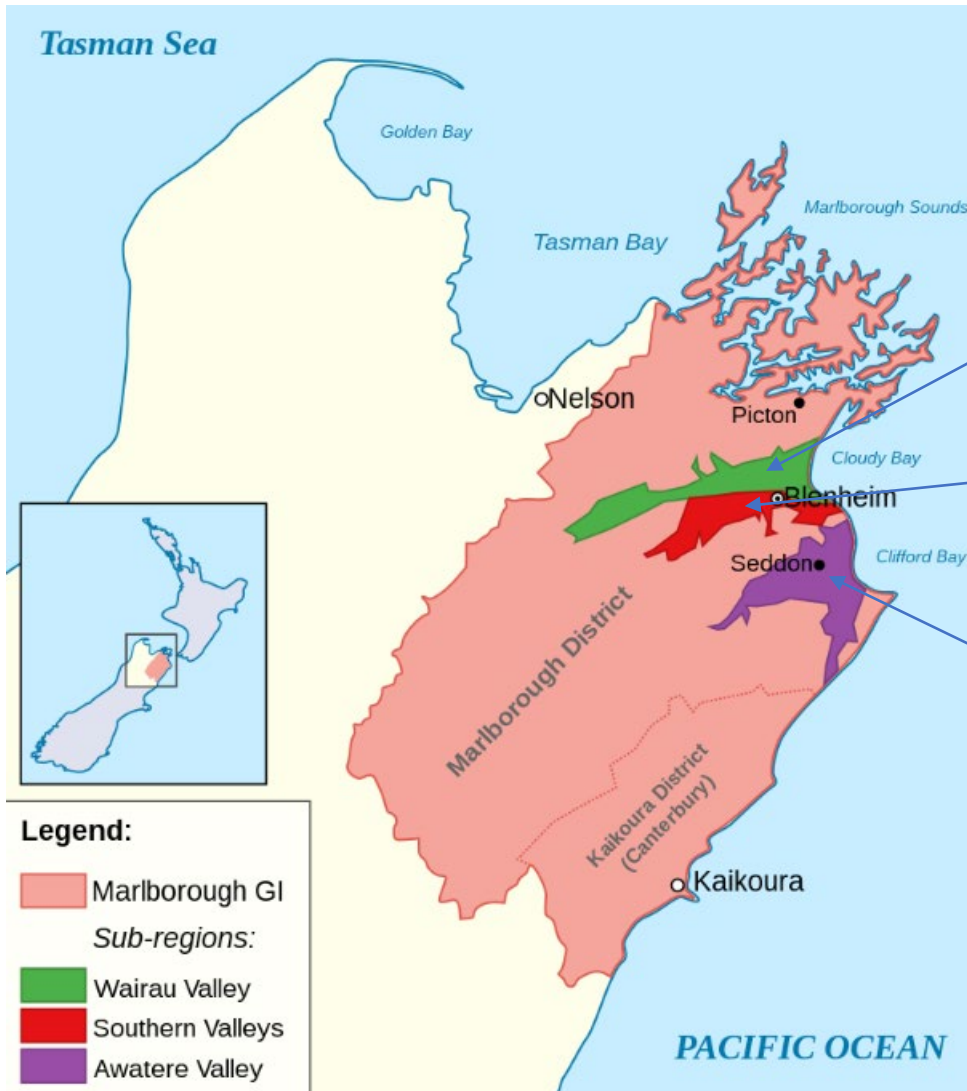


# MARLBOROUGH

- A combination of a cool yet high sunshine climate, low rainfall and free-draining, moderately fertile soil produces uniquely vivid wines.
- Marlborough put New Zealand on the international wine stage with its inimitable Sauvignon Blanc in the 1980s.
- Over 20,000ha of vines (around 2/3 of the national total) are under the care of local wine producers, making it the country's largest wine region.
- Hailed as one of New Zealand's most sunny and dry regions, Maori referred to the Wairau Valley as 'Kei puta te Wairau' – 'The place with the hole in the cloud'.



# Marlborough Terroir



## Wairau Valley:

Stoney river valley, free draining, warm temperatures and with low Fertility.

## Southern Valleys:

Crushed river gravels mixed with clay, geologically older terroir. Free draining, cooler with moderate fertility.

## Awatere Valley:

Cooler, drier, windier and based on river terraces of different altitudes with gravel loam and loess soils.



# Forrest Sauvignon Blanc

- Elegant, sophisticated and speaks to 30 + years of winemaking craft.
- Distinctive mineral backbone through the range attributed to the river soils and some of the oldest vines in Marlborough
- Beth Forrest is a driving force behind the brand's current chapter and Dr. John Forrest is an innovator in the New Zealand industry and lead the charge with screwcaps, sustainability and viticultural techniques



# Forrest Pinot Noir

- The nose offers enticing aromas of red fruit and hints of violets. The palate is round with flavors of dark fruit cake, plum and savory spices.
- The cool climate queen of red wine is a natural match for Marlborough's reliable cool and dry vintage climate. This Pinot Noir is produced from our Southern Valleys vineyard, planted over 25 years ago - a special site with geologically older soils composed of crushed river stones, intermixed with clay.

